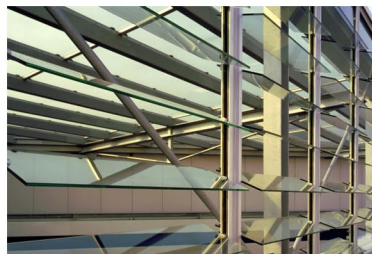
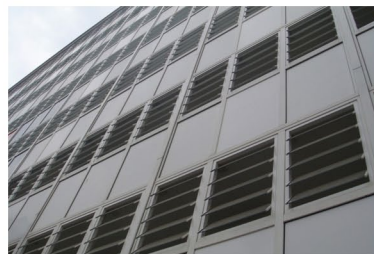




Information about louvre window GG OL BT 50 / 60



GG OVERLAPPING BT50 / BT60

The difference to GG Step-cascaded glass is that GG Overlapping slats have no steps in horizontal direction for a flush-mounted look, but imbricate when closed. The GG Overlapping frame also consists of extruded aluminium profiles with a frame construction depth of 50 or 60 mm and a frame face width of 38 mm. The GG Schuppe is approved as a natural smoke and heat extraction system according to DIN EN 12101-2:2003.

Louvre blades:

Slats consist of point-fixed all-glass single glazing panes made of ESG glass with circumferentially polished glass edges.

Glass thicknesses: BT50 - 6, 8 or 10 mm, BT60 - 12 mm

Variable slat height BT50: 120 – 300 mm

Variable slat height BT60: 200 – 300 mm

Sealings:

Lateral with felt seal and sealing brushes, frame gasket made of silicon.

Technical specification tested as per DIN EN 12101-2:2003:

- BT50 - Aerodynamic: $C_v = 0,52 - 0,59$ (opening angle 78°)*
- BT60 - Aerodynamic: $C_v = 0,48 - 0,54$ (opening angle 64°)*
- Structural stability under wind load WL 1500

* subject to model and size.

Further technical data on page 2.

Possible sizes:

Minimum frame width = 300 mm

Maximum frame width BT50 = 1500 mm (1400 NSHEV)

Maximum frame width BT60 = 1800 mm

(broader elements are available divided by glazing bars)

[Link to GG Overlapping BT50 cross section](#)

[Link to GG Overlapping BT60 cross section](#)

